

Powerful and Intuitive Control

• Features

The sophisticated YL-Clarity and Autochro-3000 data system are easy to use and offer extensive data management plus full control of the entire YL9100 HPLC products and YL6500GC. The software is designed for 21 CFR Part 11 Compliance and through full compatibility with MS Windows OS seamlessly handles data processing and instrument control using an ultra-reliable LAN interface.



● 21 CFR Part 11 compliance

■ User accounts

YL-Clarity sets up access rights and passwords (including their parameters e.g., minimum length, validity, etc.). Each user can define the appearance of their own station.

■ Audit trail

It records selected events and operations into a special file and selected operations directly into a chromatogram.

■ Electronic signature

Each chromatogram can be signed electronically. Signature selection is based on the username or the signature certificate.

● Data Acquisition

■ Overlay

YL-Clarity simultaneously displays a virtually unlimited number of chromatograms and their mathematical modification; for example, mutual deductions or derivations of any order.

■ Measuring

Simultaneous data acquisition from up to four independent chromatographs, each chromatograph can acquire data from up to 12 detectors.

● Optional Module (YL-Clarity)

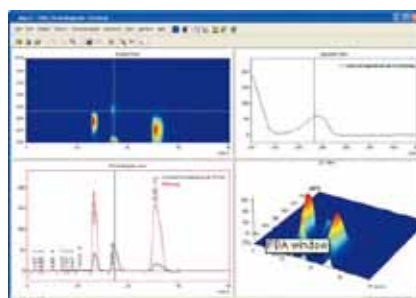
■ SST (System Suitability Test)

The program compares up to 12 selected parameters calculated according to one of three pre-selected methods (USP, EP, and JP). These calculated values are either compared to the users set limit values for each chromatogram separately or together for the selected series.



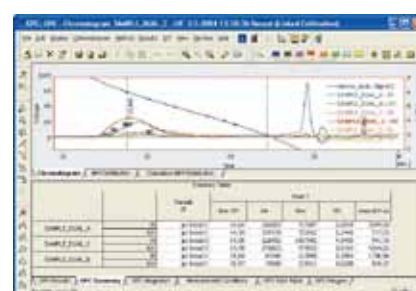
■ PDA Extension

This is to process data that has been acquired from selected photo diode array detectors. The spectral data, together with chromatograms, adds a third dimension to analytical data analysis.



■ GPC Extension

This provides interactive and automated GPC analysis, including recalibration and GPC reporting, as well as simplifies the retrieval of GPC data.



● Reliable and Convenient Data Management

■ Integration

There are extensive possibilities to optimize integration. The integration parameters can be changed by entering global parameters or interactively, through direct graphic modification of the baseline.

■ Calibration

Internal and external standard calculation methods, calibration of groups of peaks and reference peaks method for better identification.

■ Post run

YL-Clarity automatically displays, prints, exports and starts other programs after the completion of a measurement.

■ User calculations

Users can define custom calculations in the Result and Summary tables. Using the integrated editor you can create your own columns from original columns and individual mathematical functions.